



KALPAK'S K-Test Series

COMPUTERIZED UNIVERSAL TESTING MACHINE

COMPUTERIZED UNIVERSAL TESTING MACHINE

Computerized Universal Testing Machines



KIC-1-XXX-C
Capacity up to 1 KN



KIC-2-XXX-C
Capacity up to 30 KN



KIC-2-XXXX-C
Capacity up to 250 KN

Key Features include :

Tests Supported

- Tensile • Compression • Tear • Shear • Peel • Extraction • Puncture
- Friction • Flexure • Insertion • Bend • Adhesion

Load Accuracy:

+/-0.2% of Reading, Traceable to NABL Standards.

Loading Frame:

Powder coated with compact footprint with Table Mount /Floor Mount options.

Drive Mechanism:

Precision zero backlash Ball Screw driven by variable speed AC Servo drive.

Testing Area:

Single Space/ Dual space with interchangeable Load Cells.

Control Mechanism:

Through PC.

Safety Features:

Emergency Stop button, Upper and Lower limit switches with Over travel protection, Load cell Overload Protection.

Software:

Kalpak's Windows based software UTM-TEST-C for control of the Machine, Online Data acquisition to PC as well as Data analysis.

Display:

LCD Monitor

Computerized Servo Hydraulic Universal Testing Machines



KIC-XXX-SH
Capacity up to 100 KN

Key Features include :

- Dynamic test System for fatigue testing for Materials & Components up to 100 KN
- Load Capacity Options: available in 5 KN/10 KN/25KN/ 50 KN/100 KN
- Customization: As per User's performance requirements from a variety of options for Load frame Size, force capacity, Servo valve flow ratings, and pump capacity etc.

Typical Applications

- Auto Components
- Plastic
- Metals
- Adhesives
- Electronics
- Non Woven Materials
- Packing Materials
- Rubber & Elastomers
- Cords & Textiles
- Medical

Horizontal Computerized Universal testing Machine KIC-XXXX-H



Load Capacity

Up to 20 KN max. (2 Tons)

Load Cell Options

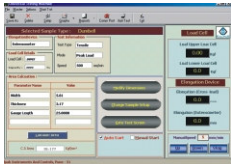
200N, 2 KN, 5KN, 10 KN ,20 KN

Drive

AC Servo Motor with AC Servo Drive

Optional Features

Ball Screw driven by variable speed drive for zero backlash.



Main Screen :

For setting Sample Details Machine Parameters & Test Parameters.



Graph View Screen :

Test Screen showing Graphical Display of Test Data alongside Sample details & Test results.



Multi Graph View Screen :

For Comparing Multiple Tests by viewing as superimposed Graphs as well as Tabular analysis of each test results.

Select Sample Type :	Sample No.	Material	Dimensions	Test Results
Steel	101	SS 304	10x10x10	1000
Aluminum	102	Al 6061	10x10x10	800
Brass	103	Brass	10x10x10	600
Copper	104	Copper	10x10x10	500
Stainless Steel	105	SS 316	10x10x10	1200
Carbon Steel	106	CS	10x10x10	900
Aluminum	107	Al 7075	10x10x10	1500
Brass	108	Brass	10x10x10	700
Copper	109	Copper	10x10x10	600
Stainless Steel	110	SS 304	10x10x10	1100
Carbon Steel	111	CS	10x10x10	850
Aluminum	112	Al 6061	10x10x10	950
Brass	113	Brass	10x10x10	650
Copper	114	Copper	10x10x10	550
Stainless Steel	115	SS 316	10x10x10	1300
Carbon Steel	116	CS	10x10x10	950
Aluminum	117	Al 7075	10x10x10	1600
Brass	118	Brass	10x10x10	750
Copper	119	Copper	10x10x10	650
Stainless Steel	120	SS 304	10x10x10	1200

Test Configuration Screen

Kalpak UTM- Test-C Software

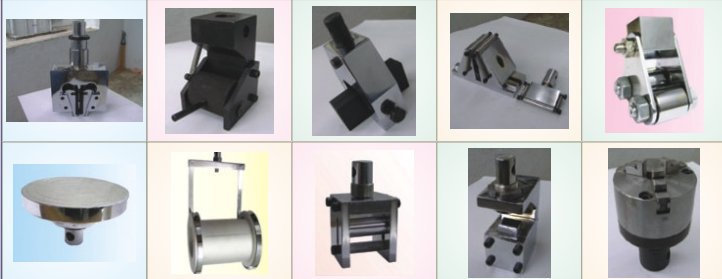
Kalpak UTM-Test-C Software is designed for user friendly Control of Kalpak Computerized Universal Testing Machine. Online Data Acquisition to PC as well as Data Analysis.

Key Features include :

- Real time display of data, Test curves
- Test results can be generated Providing Accept/ Reject Status as per defined norms.
- Online/ Off line generation of Graphs of Load Versus length, Load versus Displacement, Load Vs Elongation, Stress Vs Strain, with scaling feature.
- Comparative study of various test results using features like Multi Graphs, Bar Graphs.
- Software password protection.
- Easily accessible file system to retrieve and view stored past data.
- Automatic Calculation of Parameters like Percentage Elongation, Peak load, Break load, Displacement, Peak Elongation, Peak tensile Strength, Break tensile strength, Proof stress, Strain, Young's modulus.

Accessories:

We offer a wide range of customized accessories such as Self tightening Wedge Grips, Double Bollard Grips, Eccentric Roller Grips, Screw Clamping Tensile Grips, Bending/ Flexure testing Fixture, Wire Test Grip, Peel Test fixtures, Compression Plates, Cord Grips, Dumbbell Grip, Rolling Grip for Rubber 'O' Ring, Additional Load cells, Extensometers and Environmental Test chambers.



E-mail :kalpakpune@vsnl.com,
kalpakpune@gmail.com

www.kalpakpune.com

Tel. : +91 -20 - 24346802

